



CHINA
2000
FINE
ART

Autumn Asia Week Exhibition 2011
September, 2011

featuring works by Tao Yiqing, Lü Fengzi, Chen Chi, Zeng Xiaojun, Wei Jia, He Sai Bang, Zhang Lichen and K.S. Wong.



Tao Yiqing (1914 – 1986) - Landscape, 1956, ink and color on paper, framed, 25 x 47 $\frac{3}{4}$ in, signed with one seal

陶一清 (1914 - 1986) - 孟获城, 1956, 水墨设色纸本 镜面, 63.5 x 120.3 厘米。

款识: 一九五八年长征路上归来后写孟获城郊村落 一清, 铃印: 陶

Chen Chi (1912-2005) - Destiny, 1980, framed, ink on paper, 37 $\frac{1}{4}$ x 34 $\frac{3}{4}$ in, signed with two artist seals

程及 (1912-2005) - 缘, 1980, 水墨纸本 镜面, 94.6 x 88.2 厘米。

铃印: 程及、程及長壽





CHINA
2000
FINE
ART



Lü Fengzi (1886-1959) - Prunus and Rocks, 1930, scroll, framed, ink and color on paper, 30 $\frac{1}{4}$ x 13 $\frac{5}{8}$ in, signed with one seal

呂鳳子(1886-1959) - 雙桃雙石, 1930, 水墨設色紙本 鏡面, 76.8 x 34.6 厘米

題識: 巽生先生賞之 鳳先生 庚午



Zeng Xiaojun (b.1954)
Landscape
1999

Color and ink on paper
56 $\frac{1}{4}$ x 71 $\frac{1}{2}$ in

曾小俊 (生于 1954)

山水

1999

水墨設色紙

142.9x181.6 厘米

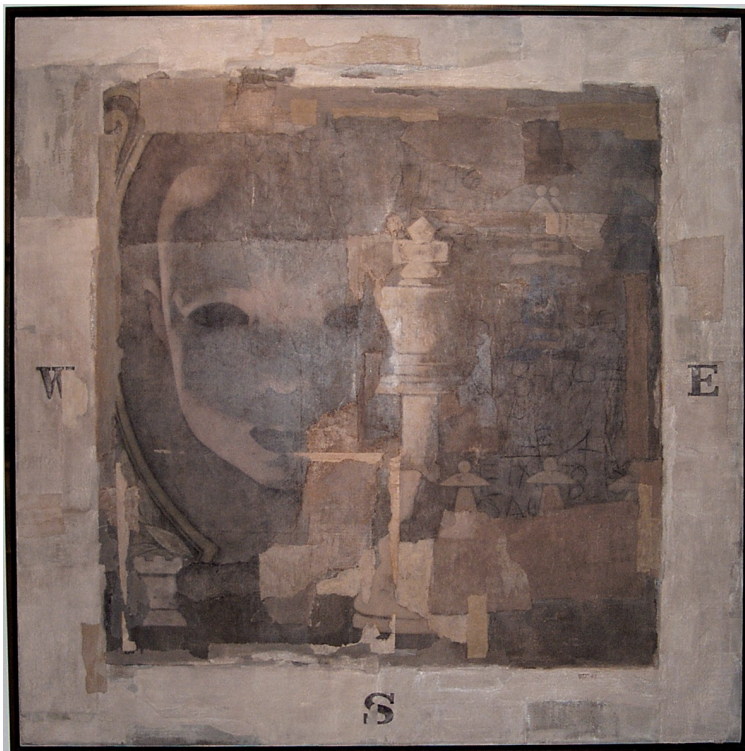


CHINA
2000
FINE
ART



Wei Jia (b.1957) - NO.0660 Yan Zhenqing, 2006, mixed media, 52 X 52 in

韋佳（生于1957）- 颜真卿
No. 0660, 2006, 綜合材料, 132.1 x 132.1 厘米



Wei Jia (b.1957) - Chess, 1997, mixed media, 61½ x 61½ in

韋佳（生于1957）- 棋, 1997, 綜合材料, 156.2 x 156.2 厘米



CHINA
2000
FINE
ART



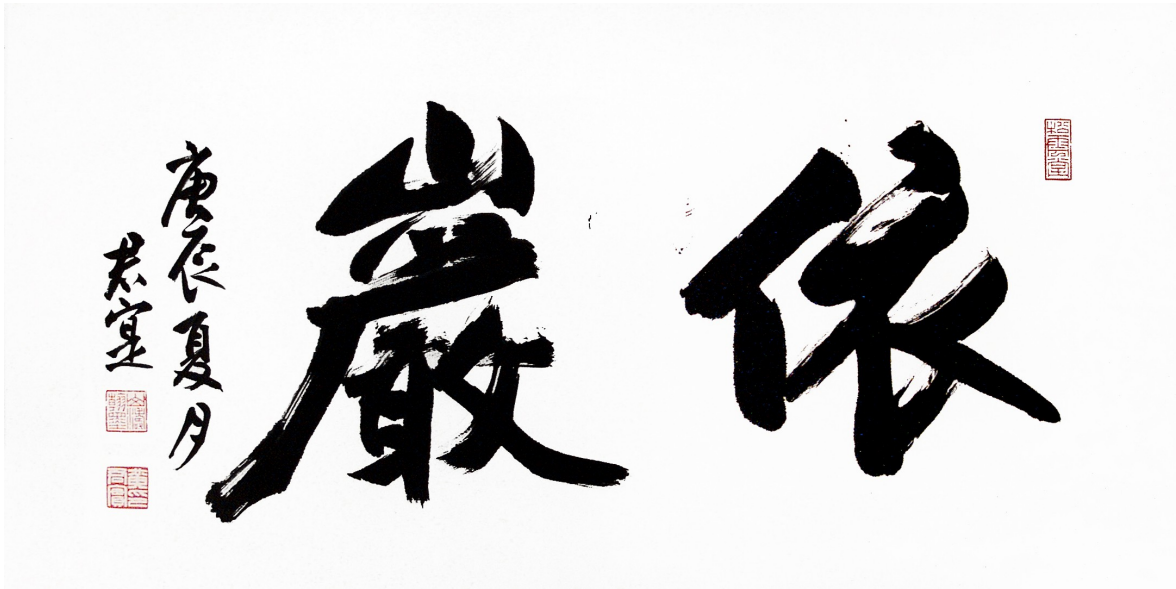
He Sai Bang (b.1959) - Golden and Silver Stones, 2006, mixed media on paper, 61 x 39 in each (A pair) 何赛邦(生于1959) - 金石和银石, 2006, 综合材料, 各154.9 x 99.1厘米(一对)



Zhang Lichen (b.1939) - Orchid, 1986, Ink and color on paper, 19 ¼ x 31 ½ in, signed with 5 artist seals 张立辰(生于1939) - 兰花, 1986, 水墨设色纸本, 48.9 x 80厘米。
铃印：渔人、立辰之印、立辰、传其内涵之神、清气乾坤



CHINA
2000
FINE
ART



K.S. Wong (b.1934) – Calligraphy, 2000, Ink on paper, 37 x 67 in, Signed with three seals.

黄君实(生于1934年) - 书法, 2000, 水墨纸本, 94 x 170.2厘米。

题识: 庚辰夏月 君实, 铃印: 黄君实印, 山涛翰墨, 松云堂